

Goa Tourism Development Corporation Limited Citizen Charter

Goa Tourism Development Corporation Limited (GTDC) was set up on 30th March, 1982 to look after the commercial activities of the Government in the service industry of tourism in the state. The liabilities of the Government in the form of accommodation (hotels), vehicles, tours / other properties were transferred to Goa Tourism Development Corporation Ltd to run and to manage the same with a view to promoting, developing in the state and to carry out business and to manage/ tourism and the welfare of the employees transferred along with the assets of the Government. Goa Tourism Development Corporation. Ltd has come a long way having completed 41 years of successful operation in tourism sector and is one of the successful Corporations in the service industry in the State of Goa.

The company is governed by the Board of Directors appointed by the Government. The Board of Directors consists of 12 members. The shareholders consist of 7 members, all of whom are Government nominees. All the shares are held by the Governor of Goa, except 7 shares which are held by its nominees. The Managing Director is the Executive Head of Goa Tourism Development Corporation Ltd.

Quality Policy

We at GTDC are committed:

- To provide our service to our customers to their complete satisfaction.
- To give value for money spent by our guest.
- To optimally utilize available infrastructure and human resources. To create & project a customer friendly & professional image.
- To comply with quality management systems.
- To periodically review established quality objectives.
- To continually improve and enhance effectiveness of quality management systems.

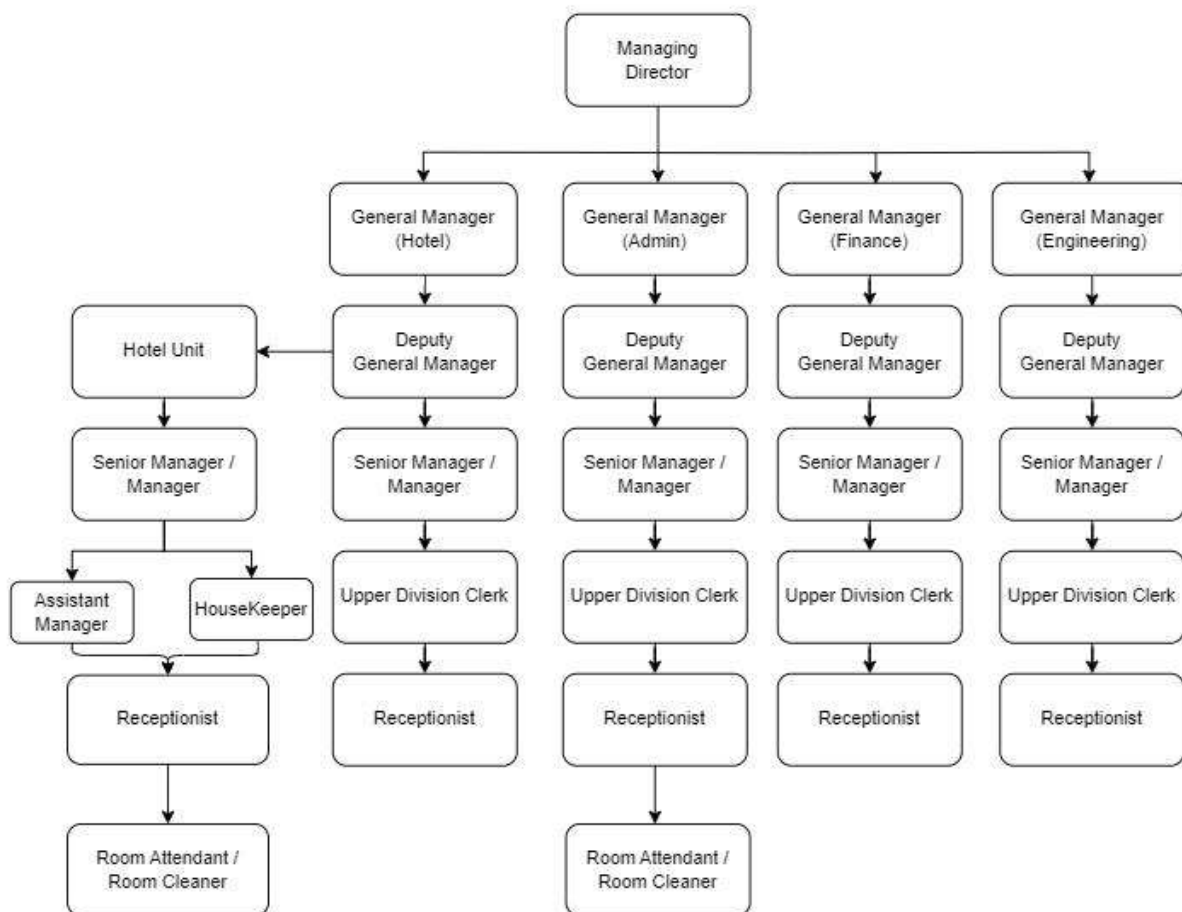
Mission Statement

“At GTDC we strive to provide the finest Tourism related services to our guests. We vow never to sacrifice our professional integrity and to produce the highest quality work possible and pledge to stay true to it. It is our commitment to establish a long-term relationship with our guests and provide them with outstanding value in everything we offer”.

Vision Statement

To be a trusted guide to visitors in Goa for all their travel needs, and be a perfect exponent of Goa's well-known hospitality.

ORGANISATION STRUCTURE:



Manpower training for the tourism industry

Annual training programs are conducted for staff of GTDC at all levels to enhance their professional and personal development.

Grievance Redressal Mechanism:

Grievances to be addressed to the Executive Head i.e. Managing Director of Goa Tourism Development Corporation Ltd, who exercises all the powers conferred upon him under the Act.

Important Contact Details

Goa Tourism Development Corporation Ltd,
 Paryatan Bhavan, 3rd Floor, Panaji-Goa, India 403001
 Tel: 0832 2437132/ 2437728/ 2438515/ 2438866

Fax: +(91)-(832)- 2437433

Email: reservations@goa-tourism.com

Website: www.goa-tourism.com

CORPORATE OFFICE

Chairman GTDC

Dr. Ganesh Gaonkar

Chairman

chairman@goa-tourism.com

Tel : +(91)-(832)-2438063

Fax : +(91)-(832)-2437433

Managing Director GTDC

Suneel Anchipaka, IAS

Managing Director

md@goa-tourism.com

Tel Off: +(91)-(832)-24237159

Fax : +(91)-(832)-2437433

Engineering / Cruises

Sachin Gore

General Manager

sachingore@goa-tourism.com

Tel Off: +(91)-(832) 2437132/ (832) 2437728/
(832) 2438515

Mobile: + 91 94220575783

Hotels, Marketing & IT

Gavin Dias

General Manager

gavindias@goa-tourism.com

Tel Off: +(91)-(832) 2437132/
(832) 2437728/ (832) 2438515

Mobile: + 91 9922193395

Administration, Travel & Transport

Laxmikant Vaigankar

General Manager

laxmikant@goa-tourism.com

Tel Off: +(91)-(832) 2437132/ (832) 2437728/
(832) 2438515

Mobile: +91 9422442275

Finance & Properties

Kapil Paiguinkar

General Manager

kapil@goa-tourism.com

Tel Off: +(91)-(832) 2437132/
(832) 2437728/ (832) 2438515

Mobile: + 91 7798679838

Admin, Shops, Restaurants & Legal

Ninfa Da Silva

Dy General Manager

ninfa@goa-tourism.com

Tel Off: +(91)-(832) 2437132/ (832) 2437728/
(832) 2438515

Mobile: +91 9689937287

Hotels, Marketing, IT & Public Relations

Deepak Narvekar

Dy General Manager

deepak@goa-tourism.com

Tel Off: +(91)-(832) 2437132/
(832) 2437728/ (832) 2438515

Mobile: +91 9422847166

Finance, Transport & Properties

Kundan D. Naik

Dy General manager

kundan@goa-tourism.com

Tel Off: +(91)-(832) 2437132/ (832) 2437728/
(832) 2438515

Mobile : +91 9822101365

Engineering

Ashok Shirgaonkar

Dy General manager

ashokshirgaonkar38@gmail.com

Tel. 7(91)-(832) 2437132 / (832)
2437728 / (832) 2438515

Mobile no : +91 9404312742

Estate Manager Aguada Jail Complex

Sandeep Gawas

Dy. General Manager

Tel Off: +(91)-(832) 2437132/

(832) 2437728/ (832)

2438515

Mobile: +91 8698074929

RESIDENCIES

| RESIDENCY | DISTANCE | CONTACT NO | E-Mail id |
|------------------|--|------------|--|
| PANJIM | -Dabolim Airport 30 km -Karmali Rly St 12 km -KTC Bus Stand, Panaji 1 km | 7887897524 | panjimresidency@goa-tourism.com |
| MARGAO | -Dabolim Airport 30 km -Margao railway station 2 km | 7887897522 | margaoresidency@goa-tourism.com |
| MAPUSA | -Dabolim Airport 45 km -Tivim Rly station 8 km | 7887897523 | mapucaresidency@goa-tourism.com |
| VASCO | -Dabolim Airport 7 km -Vasco Rly station 100 mt -Panaji City 32 km | 7887897525 | vascoresidency@goa-tourism.com |
| CALANGUTE | -Dabolim Airport 48km -Tivim Rly Station 16km -Karmali Rly Station 25km -Vasco Rly Station 46km -Margao Rly Station 46km | 7887897528 | calanguteresidency@goa-tourism.co |
| MIRAMAR | -Dabolim Airport 33 km -Karmali Rly St 14 km | 7887897526 | miramarresidency@goa-tourism.com |
| | | | |
| COLVA | -Dabolim Airport 28km -Margao Rly St. 8km | 7887897527 | colvaresidency@goa-tourism.com |
| FARMAGUDI | -Dabolim Airport 36 kms -Margao Rly St 22 kms -Panjim city 26 kms | 7887897531 | farmagudi@goa-tourism.com |

| | | | |
|------------------------|---|------------|--|
| OLD GOA | -Dabolim Airport 42km – -Margao Rly St 30km | 7887897532 | oldgoa@goa-tourism.com |
| MAYEM LAKE VIEW | -Panaji city 10km -Thivim Rly St 12km -Panaji city 24km | 7887897556 | mayemlake@goa-tourism.com |

PROPERTIES (excluding Residencies) OWNED BY GTDC:

| Sr. No. | Name of the property | Survey nos. | Area of land (In Sq. Mtrs.) | Build-up area (In Sq. Mtrs.) | Whether the property is allotted on Private Investment Mode/ Leave and License basis |
|---------|--|--|-----------------------------|------------------------------|--|
| 1 | Shopping Complex, Mapusa | P.T.Sheet 145, Chalta No.2/8 of City Survey Mapusa. | | | No |
| 2 | Godown at Farmagudi (2 shops) | Survey no. 220/0 of village Bandora taluka Ponda - Goa | | 553.5 | No. |
| 3 | Britona Riverside | | 19,874.00 | 1,309.04 | Yes |
| 4 | Land at Britonna (newly transferred land at Britonna staff quarters) | Survey no. 52/1-A of Village Penha da Franca Taluka Bardez Goa. | 3,110.00 | 768.56 | |
| 5 | Terekhol Fort Rest House | Survey no. 2/5(part), 2/9(part), 2/18(part) and 16/1(part), 2/63(part), 2/85, 2/93, 2/58(part), 2/76(part), 2/88, 2/77(part), 2/78(part), 2/81(part), 2/82, 2/80(part), 2/84(part), 2/86, 2/87, 2/90, 2/91(part), 2/94, 2/89 and 2/92 of village Tiracol taluka Pernem - Goa | 53,081.00 | 1,369.13 | Yes |

| | | | | | |
|----|---------------------------------------|--|---------------|------------------------|-----|
| | | Survey no. 112/1(part), 112/2(part), 116/1(part) and 116/2(part) of village Querim taluka Pernem - Goa. | | | |
| 6 | Pernem Wayside Resort | Survey no. 186/15-A and 186/16-A of village Pernem taluka Pernem - Goa. | 9,375.00 | 455.67 | Yes |
| 7 | Shopping Complex, Calangute | Survey no. 176/1-B, 176/2, 176/3-A, 176/13-A, 176/14-A, 176/16-C, 176/17-A, 176/24 & 175/1-A of village Calangute taluka Bardez - Goa | 3,769.00 | 816.7 | Yes |
| 8 | Kiosk at Ramnathi | Survey no. 36/43 of village Bandora taluka Ponda - Goa | 1000 | No existing structures | No |
| 9 | Land, Restaurant & Shelter at Vagator | Survey no. 338/1 to 7, 334/1,2,7, 335/1 to 9, 336, 337/1 to 8, 339/3 to 12, 597/1 to 3, 597/6 to 10, 341, 597/1Part to 6/Part of village Anjuna (Vagator) taluka Bardez - Goa. | 53,183.00 | 77.7 | Yes |
| 10 | Land & Restaurant at Benaulim Beach | Survey no. 365/2-A and 365/2-B of village Benaulim taluka Salcete - Goa. | 20,250.00 | 251.57 | Yes |
| 11 | Rest House & Cottages at Selaulim | Survey No.31/2-A, 56/1-A and 25/1-A of Village Xelpem Taluka Sanguem - Goa. | 13,000.00 | 793.57 | Yes |
| 12 | Mollem Resort | Survey no. 59/1 of Village Mollem Taluka Dharbandora Goa. | 1,23,000.00 | 1,672.67 | Yes |
| 13 | Restaurant at Tamdi Surla | Survey no. 16/4 of Village Tamdi Surla Taluka Dharbandora Goa. | 6,750.00 | 138.18 | Yes |
| 14 | Cafeteria at Pomburpa | Survey no. 12/1 and 2 of Village Pomburpa Taluka Bardez Goa. | 4975 | 10 | No |
| 15 | Snackteria at Dudhsagar | Not Available | Not intimated | No existing structures | No |

| | | | | | |
|----|------------------------------------|---|-------------|------------------------|-----|
| 16 | Land and Restaurant at Anjuna | Survey no. 206/1-H, 210/5-A, 211/1, 2,3,4,5,6,7 & 8, 212/1,2,3,4,5& 6 of village Anjuna Taluka Bardez - Goa. | 79,097.00 | 184 | Yes |
| 17 | Restaurant & Amusement at Kesarval | Survey no. 123/Part, 124/2(part), 126/Part, 113/Part, 114/Part & 125/Part of village Quellosim Taluka Marmugao Goa. | 28,282.00 | 741.15 | No |
| 18 | Land at Baga | Survey no. 281/1(part), 2, 3 and 249/1(Part), 282/1 to 48, 283/1 to 4, 280/15 to 29 village Calangute taluka Bardez Goa | 52,006.00 | No existing structures | Yes |
| 19 | Jail Premises at Aguada | Survey no. 91/0 and 92/0 of village Candolim Taluka Bardez Goa. | 1,16,225.00 | 4,353.35 | Yes |

WORKING HOURS:

1. Corporate Office:

09.30 a.m. to 05.45 p.m. (5 days a week) (Lunch break: 1.15 p.m. to 2.00 p.m.)

2. Reservation Desk:

09.30 a.m. to 05.45 p.m. (6 days a week) Hotel Residencies: Hotel operations are open for 24 hours in rotation.

SERVICES:

Business activities carried out by GTDC are in the form of

- Providing Accommodation
- Sightseeing Tours & Tour Guides
- Organizing Events
- Promoting tourism in hinterland / Eco-tourism
- Hiring out of Vehicles
- Appointment of Travel Agents
- Housing of Shops, Shopping Complex & Restaurants
- Promotional Campaigns

ACCOMODATION

Goa Tourism Development Corporation. Ltd is having chain of 10 hotels (Hotel Residencies) and providing accommodation for the visiting tourists to the State. These hotel residencies are situated on prime Goan beaches, important cities, port town, and interior hinterlands and close to World Heritage sites. Goa Tourism Development Corporation. Ltd caters to domestic and international tourists. Some of these residencies are having restaurant service, besides some are having conference halls, shopping centers, running variety of business activities in the residencies. The details of accommodation are as follows:

| 1. City | | | |
|---------------------|---------------------|--|---------------------------------|
| Residency | No. Of Rooms | Type of Rooms | Hall |
| a) Panaji Residency | 45 | AC Standard Room AC Deluxe | |
| b) Margao Residency | 71 | Double Room – Standard AC Standard Room AC Suite | Mini AC (40) |
| c) Mapusa Residency | 48 | Double Room – Standard AC Standard Room AC Suite 4 Bedded Room | Main Non AC (500), Mini AC (60) |
| d) Vasco Residency | 45 | Double Room – Standard AC Standard Room | Mini AC (60) |

| 2. Beach | | | | |
|------------------------|--------------------|---|----------------|--------------|
| Residency | No. of Room | Type of Rooms | Hall | Lawns |
| a) Calangute Residency | 52 | Deluxe Sea front view AC Suite AC Deluxe Side View AC Deluxe Cottages | | |
| b) Miramar Residency | 60 | AC Standard Room AC Deluxe AC Suite | Main AC (200), | |
| c) Colva Residency | 47 | Double Room – Standard AC Standard Room (Front) / (Rear) | | |

| 3. Eco | | | | |
|---------------|--------------------|----------------------|-------------|--------------|
| | No. of Room | Type of Rooms | Hall | Lawns |
| | | | | |

| | | | | |
|------------------------|----|--|-------------------|------------------|
| a) Farmagudi Residency | 39 | Non AC Room AC Suite Standard Room Double Standard Room (AC) 4 Bedded Room 12 Bedded | | Farmagudi Greens |
| b) Old Goa Residency | 45 | Double Room - Standard AC Standard Room AC Deluxe | Main Non AC (500) | |
| c) Mayem Residency | 17 | AC Deluxe AC Cottage AC Suite Dormitory (8 beds) AC Standard Room | | |

Tips For Guests:

- Check-in and Check-out time –12 noon.
- Children between 3 to 11 years will be charged Rs. 350/- per child (Room only) Rs. 500/- per child (with breakfast) only at Calangute Residency.
- GST is charged at the rate determined by Govt. of Goa from time to time.
- Presently GST is applicable @ 12% for tariff from Rs. 1/- to Rs.7500/- per day, @ 18% for tariff from Rs. 7,501/- and above.
- The use of electrical appliances like iron, hot plate etc. and cooking is not permitted in the rooms.
- Deposit your valuables at the Reception Counter against a Receipt.
- Goa faces a water shortage even though it receives abundant rainfall. Please use water with care and caution.
- Do not use plastic bags; ask for paper bags. Do not litter beaches or places of historic importance with plastic or other waste in any public areas. In Goa, plastic is banned in certain public areas.
- As a matter of concern for the environment, we change the room linen and towels every alternate day. You could request for a daily change if required.
- Contact Reception for any assistance during your stay. Lock doors and windows when you leave the room.
- Before leaving your room, keep your room key with the Reception. Do not use your own lock.
- Goa Tourism Dev. Corpn. Limited, conducts various tours and cruises known for safety and professional service. Please avail of tours and cruises conducted by Goa Tourism only.
- Swimming in the sea during the monsoon is not allowed. Do not enter venture into the sea under the influence of alcohol.

- Swimming in the sea is dangerous. Swim only in safe areas where a lifeguard is present.

Tours

Goa Tourism Development Corporation. Ltd is having 8 fleet of buses, besides tourist cars that operate different tours / packages within and outside the State. The tours are as follows:

| Sr. No | Tour | Day / Days |
|---------------|-----------------------------|-------------------|
| | Regular Tours | |
| 1 | North Goa Tour (Ex- Panaji) | Daily |
| 2 | South Goa Tour (Ex- Panaji) | Daily |
| 3 | Mayem Special Tour | Saturdays |
| 4 | Canacona Special Tour | Sundays |
| 5 | RajBhavan Darshan | Saturdays |
| 6 | Tirupati Tour | Every Day |

New Tourism Services

Go Tourism Development Corporation has introduced various Season and Off-Season New Tourism Services for the tourists.

| SR No | Name of Service | Name of Service Provider | Area of Operation | Season of Operation | Contact No | Email |
|--------------|------------------------------|-----------------------------------|---|----------------------------|-------------------------|--|
| 1 | Hot Air Ballooning | Camping Retreats India Pvt Ltd | Assolda Football Ground, Chandor, South Goa, Goa | Oct to May | 9999742000 | tigerballoonsafaris@gmail.com |
| 2 | Scuba Diving and Snorkelling | Flying Fish Diving India Pvt. Ltd | GTDC Calangute Residency, Calangute, Goa-403516 | Oct to May | 9810110189 / 9811018181 | dive@flyingfish.in |
| 3 | Bungee Jumping | Jumpin Adventires Pvt Ltd | Survey No. 161/1, Mayem, GTDC, North Goa – 403504 (India) | Aug - May | 9689807907 | sagar@jumpinheights.com |

| | | | | | | |
|---|--------------------------------|-------------------------------------|--|------------------------|-------------------------|-----------------------------|
| 4 | Motorised Paragliding | Flying Safari Pvt. Ltd | Paliyem Hilltop, North Goa | Oct to May | 0.998698923 | paraglidingrhine@gmail.com |
| 5 | White Water Rafting | Southern Rivers Adventures Pvt. Ltd | The Cashew House In Nagargao, Near Valpoi, Goa. | Jun to Oct | 9545305734 / 9353395022 | goarafting@gmail.com |
| 6 | Battery Operated Bicycle Tours | Arcis Tours Pvt. Ltd | Blive Cycling Hub Panaji – Opposite Santa Monica Jetty, Multi Level Car Park, Panaji– 403001 Blive Cycling Hub Old Goa – Old Goa Residency, Old Goa, - 403402 | All months of the year | 8047190022 | info@blive.co.in |
| 7 | App based Taxi (Goa Miles) | Fortamiles Pvt. Ltd | All across Goa | All months of the year | 9607198989 | support@goamiles.com |
| 8 | Konkan Explorer | Konkan Nautic Pvt Ltd | Point 1 – Old Jetty, Chopdem. Address – Chopdem, Morjim, Goa , Goa 403512 Santa Monica Tourism Jetty. Address – Alto Porvorim, Panaji, Goa 403101 | All months of the year | 9689313506 | connect@konkanexplorers.com |

| | | | | | | |
|----|-----------------------|--------------------------------|---|------------------------|---------------------------|---|
| 9 | Floatel cum Houseboat | Gomantak Cruise Liner Pvt. Ltd | Tourist Jetty, Below Mandovi Bridge, Panaji Goa | Oct to May | 8512891 212/ 9953100 010 | info@sangriacruise.com / reservation@sangriacruise.com |
| 10 | Heritage Boat Cruise | Mhadei Luxury Cruise LLP | Tourist Jetty, Below Mandovi Bridge, Panaji Goa | Oct to May | 9356617 129 / | mhadeiluxurycruises@gmail.com |
| 11 | 9D Entertainment Box | Racecon Entertainment Pvt Ltd | Opp Baga beach parking area, Saunta Vaddo, Baga, Goa 403516 Behind Shri Mahadev Taleshwar temple, Baga beach. | All months of the year | 9823744 577 / 8830662 977 | |

Tour Guides

GTDC uses the skilled services of Government recognized tour guides who have been trained extensively and intensively in the culture, tradition and history of Goa.

Cancellation Rules on Booking of the following:

Rules for Cancellation of Accommodation.

- 25% when intimation is received 30 days or more in advance.
- 50% when intimation is received more than 3 days (72 hours) or more but less than 30 days in advance.
- 100% when intimation is received less than 3 days (72 hours) in advance.
- Charges will be debited against one day s advance.
- Cancellation or curtailment of period of stay refund if any will be at the discretion of the Manager of the unit.
- Cancellation of group booking will be charged 50% on room rent on its period of stay (5 rooms and above).
- Cancellation of any booking will be charged 50% for more than 3 days stay and 100% for less than 3 days for the period of stay during peak season.

Rules For Cancellation Of Open Air Venues

- 25% when intimation is received 30 days or more in advance.
- 50% when intimation is received more than 3 days (72 hours) or more but less than 30 days in advance.
- 100% when intimation is received less than 3 days (72 hours) in advance.

Rules For Cancellation Of Halls

- 25% when intimation is received 30 days or more in advance.
- 50% when intimation is received more than 3 days (72 hours) or more but less than 30 days in advance.
- 100% when intimation is received less than 3 days (72 hours) in advance

Rules For Cancellation Of Vehicles

- No cancellation of vehicle is allowed once booked

Organising Events

Core Events

Shigmo-March

Shigmo is one of the biggest festivals that falls either in March or April. A spring festival that is celebrated in music, song and dance. The commemorations have moved from the village centres to grand parades through the towns. Large crowds witness the spectacular performances. A float parade winds its way down the streets once the sun sets and the lights come on. The music is typically dhol, taasha and kasale. Usually the festivities revolve around the village Mand. The Mand-dev and folk dieties are an essential part of the traditions.

Sao João Fest- June

Celebrated on board Santa Monica Luxury Launch every year on 24th June, the feast day of St. John Baptist to commensurate the leap of joy the saint gave in his Mother Elizabeth's womb when Mother of Christ came to greet her. This festival coincides Monsoon promotional Campaign and is attended by tourists both from within the country and abroad as well as Goans who just love the Saint.

Bonderam Fest –Divar- August

GTDC organizes cruises with dinner on board by taking tourists and locals to witness the festivals off-lags “Bonderam” at the Island of Divar. The festival depicts the facets of Goa with colourful cultural floats.

World Tourism Day/ Week Celebration- September

GTDC in association with Department of Tourism organizes World Tourism Day/Week. The Programmes/Events are organized on the theme of the World Tourism Day every year.

Christmas Tree Celebration -December

GTDC in association with its Staff Welfare Association organizes Christmas Tree celebration for kids every year in Christmas week by inviting children of employees, organizing games and giving away refreshments to the kids.

Assisted Events

Carnival Celebrations- February

GTDC in association with Department of Tourism organizes Carnival in 4 main cities of Goa by forming State Level Carnival Celebration Committee.

Chikhal Kalo - June

GTDC in association with Department of Tourism organizes Chikhal Kalo (Mud Festival) in the village of Marcel Goa. Chikhal Kalo, a religious festival exclusive to the village of Marcel in Goa, is a rare combination of devotion and enjoyment. It occurs annually on the 11th day of the Hindu month of Ashadh, held within the expansive grounds of the Devki Krishna temple.

Tripurari Purnima (Boat Show)- November

GTDC extends assistance in organizing Tripurary Purnima / Boat Show in the holy river of Valvanti at Vithal Temple premises at Sanquelim every year in the month of November.

Government of Goa has declared this festival as a state festival. This festival receives tremendous response from tourists and local people. GTDC float special package for tourist to witness this spectacular Boat Festival under full moon glitter.

Hiring out of Vehicles

Tourist Taxi Rates :

◆◆◆

Department of Transport
Directorate of Transport

—
Notification

D.Tpt/STA/2375-111/2019/2037

In pursuance of the Government Notification No. D.Tpt/STA/2375-111/2019/351 dated 10th February, 2020, published in the Official Gazette, Series II No. 47, dated 20th February, 2020, and in supersession of Government Notification No. D.Tpt/STA/2375-111/2019/144 dated 14-01-2021 published in the Official Gazette (E Series I No. 42 dated 14th January, 2021, the State Transport Authority hereby fixes the following fares chargeable by the operators of contract carriages for hire in the State of Goa, namely:—

Rates of fare for Tourist Taxi, Motor Cab and Maxi Cab

| Sr. No. | Engine capacity of motor cabs | Make | For 4 hours (1/2 day) upto 50 kms. | For 8 hours (full day) up to 100 kms. | Extra charges per/km. for exceeding limits stated in column (4) and (5) | Extra charges per/hour for exceeding hours stated in Column (4) and (5) | One way journey without return fare per km. |
|---------|-------------------------------|--|------------------------------------|---------------------------------------|---|---|---|
| (1) | (2) | (3) | (4) | (5) | (6) | (7) | (8) |
| 1. | 998cc to 1199cc | Hatchback like Wagon R, Hyundai i10, Santro, Celerio, Ford Figo, Ecco etc. | Rs. 1050/- | Rs. 2050/- | Rs. 21/- | Rs. 100/- | Rs. 29/- |
| 2. | 1200cc to 1499cc | Hatchback like Swift, Baleno, i20, Liva, Datsun Ready-Go, VW-Polo, Jazz etc. | Rs. 1150/- | Rs. 2250/- | Rs. 23/- | Rs. 100/- | Rs. 36/- |
| | | Saloon/Sedan like Swift DZire, Honda Amaze, Etios, Breezza, BR-V etc. | Rs. 1350/- | Rs. 2600/- | Rs. 29/- | Rs. 100/- | Rs. 43/- |

OFFICIAL GAZETTE — GOVT. OF GOA

SERIES I No. 19

5TH AUGUST, 2021

| (1) | (2) | (3) | (4) | (5) | (6) | (7) | (8) |
|-----|---------------------|--|------------|------------|-----------|-----------|-----------|
| 3. | 1500cc to 2499cc | SUV Regular like Creta, Ecosport, Thar, Innova (Old), Marazzo, Tata Aria, Jeep Compass, Duster, Ertiga, Bolero etc. | Rs. 1650/- | Rs. 3200/- | Rs. 35/- | Rs. 100/- | Rs. 49/- |
| | | SUV/MPV(Passenger) Premium like Innova Crysta, Tucson, Tiguan etc. | Rs. 1800/- | Rs. 3500/- | Rs. 36/- | Rs. 100/- | Rs. 49/- |
| 4. | 2500cc and above | Premium Cab (Mercedes, BMW, AUDI, Fortuner, Ford Endevour, Jaguar, Land Rover etc.) | Rs. 4750/- | Rs. 8700/- | Rs. 102/- | Rs. 100/- | Rs. 149/- |

Notes

- (1) The above rates are for self employed Tourist Taxi Operators attached to Beach and Star Hotels.
- (2) The Tourist Taxi fare rate in Column (4) to (7) applies to round trip journey.
- (3) Taxi utilized for Night Journey after 11 p.m. till 5 a.m. will attract night charges of Rs.100/- per hour.
- (4) Taxi utilized after 11 p.m. till 5.00 a.m. will be charged 35 % on the above tariff.
- (5) All tolls, ferry charges, taxes if applicable and parking fees to be paid by the hires/customer.
- (6) In case passengers desire to avail the vehicle on sharing basis, the figures in Column (4) and (5) should be divided by the capacity of the vehicle so as to arrive at per passenger cost.
- (7) If any vehicle of capacity, make and model is not covered in this list, the permit holder shall apply to STA for fixing the fares and updating the list.
- (8) The permit holders shall display the fares at prominent place in their vehicles.

This Notification shall come in to force on the date of its publication in the Official Gazette.

Rajan Satardekar, Member Secretary, State Transport Authority.

Panaji, 4th August, 2021.

GTDC arranges all types of vehicles for tours /excursions /pickups /drops /arrivals /departures from Railway Stations, Airport, Bus Terminus to the respective GTDC Residencies or any other location within Goa and outside Goa rates as given below. Kilometer readings are calculated from Garage to Garage basis. Panaji is considered as Garage Station for all vehicle bookings. Passenger tax of respective State is applicable for vehicle hired for trips outside Goa.

Central Excise Service Tax is applicable on mileage covered or rate determined by Govt. of Goa from time to time.

STATEMENT SHOWING RATES OF AC Tempo Traveller and Coach (Short Term) - DAILY BASIS

| S R | Types of CARS | Rate / km upto 100 kms (AC) | Extra kms after 100 kms (Rs) | Extra Hour (Rs) | Night Charge 8:00 PM to 12:00 AM (Rs) | Night charge after 12:00 AM (Rs) | Outstation Allowance (Rs) | 24 hrs / km. Charge (Rs) |
|--------|--------------------------|-----------------------------------|---|-----------------------|---|--|---------------------------------|-----------------------------------|
| | | (Rs) | (Rs) | (Rs) | (Rs) | (Rs) | (Rs) | (Rs) |
| 1 | Coach (Non AC) | 32 | 35 | 100 | 200 | 200 | 500 | 8450 |
| 2 | Etios / Dzire (Ac) | 26 | 29 | 100 | 200 | 200 | 500 | 6950 |
| 3 | WagonR (Ac) | 20.5 | 21 | 100 | 200 | 200 | 500 | 5200 |
| 4 | Innova Crysta (AC) | 35 | 36 | 100 | 200 | 200 | 500 | 8900 |

Terms and Conditions :

1. 12% GST on Total bill amount.
2. Minimum 8 hrs/100 kms. Per day Garage to Garage.
3. Vehicles hired before 7:00 am will be charged Rs. 150 /-as early morning charge
4. Extra hour charged after 8 hours duty.
5. Cars required on 24 hrs basis will be charged or min 250 kms, And driver allowance @ Rs.500 /-

CANCELLATION : NO CANCELLATION OF VEHICLE IS ALLOWED ONCE BOOKED

STATEMENT SHOWING RATES OF AC Tempo Traveller and Coach (Short Term) - DAILY BASIS

| SR | Types of Vehicles | Rate / km upto 100 kms AC (Rs) | Extra kms after 100 kms (Rs) | Extra Hour (Rs) | Night Charge After (Rs) | Outstation Allowance (Rs) | 24 hrs / km. Charge (Rs) |
|----|-------------------------|---|--|-----------------------|----------------------------------|---------------------------------|--------------------------------|
| 1 | Coach (Non AC) | 45 | 45 | 100 | 500 | 800 | 11,250.00 |
| 2 | Coach | 55 | 55 | 100 | 300 | 800 | 13,750.00 |

Terms and Conditions :

1. 12% GST on Total bill amount.
2. Minimum 8 hrs/100 kms. Per day Garage to Garage.
3. Extra hour charged after 8 hours duty.

4. Cars required on 24 hrs basis will be charged or min 250 kms, And driver allowance @ Rs.500 /-

CANCELLATION : NO CANCELLATION OF VEHICLE IS ALLOWED ONCE BOOKED

Tie-up with Travel Agents

GTDC has dedicated travel agents who are registered with the Corporation from all across India.

| | |
|------------------|----------------------|
| 1. Ahmedabad | 2. Bangalore |
| 3. New Delhi | 4. Chennai |
| 5. Andra Pradesh | 6. Mumbai |
| 7. Kolkata | 8. Gurgaon - Haryana |
| 9. Goa | 10. Jaipur |
| 11. Hubli | 12. Nagpur |
| 13. Nasik | 14. Pune |
| 15. Thane | 16. Solapur |
| 19. Ratnagiri | 18. Nepal |

Housing of Shops & Shopping Complex/Restaurants

GTDC residencies house various shops and restaurants. These shops and restaurants have been allotted on leave & license to private enterprises.

| Place | Shops | Restaurant /Spa |
|-------------------------------|-----------------------|-----------------------|
| Residencies | | |
| a) Panaji Residency | 2 | 1 Restaurant 1 Spa |
| b) Margao Residency | 4 | 1 Restaurant |
| c) Mapusa Residency | 7 | 1 Restaurant |
| d) Vasco Residency | 24 | 1 Restaurant |
| e) Calangute Residency | 5 | 1 Restaurant |
| f) Calangute Residency Annexe | Full Complex on lease | 1 Restaurant |

| | | |
|-------------------------|-------------------|---------------|
| g) Miramar Residency | 3 | 1 Restaurant |
| h) Colva Residency | | 1 Restaurant |
| i) Farmagudi Residency | 1 (Panda Bus St.) | 1 Restaurant |
| | 2 Godowns | |
| j) Old Goa Residency | - | 1 Restaurant |
| k) Mayem Lake View | Under Lease O & M | 1 Restaurant |
| Shopping Complex | | |
| a) Calangute Residency | 5 | 3 Restaurants |
| b) Mapusa Residency | 5 | |

Tips for Tourists

- 1) Do not keep your valuables unattended during your stay at the beaches.
- 2) Do not indulge in drug offence, as these are punishable under the law.
- 3) Nudity on beaches and public places is forbidden and punishable under the law.
- 4) Follow police traffic rules strictly. Keep your valid documents: driving licence, passport, etc in your possession while driving. Traffic circulation is on the left.
- 5) Do not keep your money, passport in the custody of undesirable persons.
- 6) Exchange your money through authorized banks /money changers only and insist on a receipt.
- 7) While shopping avoid touts and brokers.
- 8) Shopping is recommended from Government emporiums.
- 9) Do-not purchase rail/air/bus tickets through strangers or unauthorized travel agents/tour operators but from authorized agencies/counters only.
- 10) Voltage in Goa is 220 volts AC 50 Cycles.
- 11) In case of any difficulty contact the nearest Tourist Bureau or Police Station for help Tourist police are situated at strategic points. Tourists are advised to contact them for any assistance required during the visit.
- 12) Always hire government approved tourist guides who invariably carry an ID card.
- 13) Smoking and spitting not allowed in public places.
- 14) Goa is a plastic free zone. Discourage any use of plastic bags etc.
- 15) Observe local traditions and customs while visiting religious places.

While on the Beach - Beach Safety Patrol (Do s & Don ts)

- 1) The lives of tourists are very precious to Goa Tourism Development Corporation. While most beaches in Goa are safe during fair weather, it is very important to follow certain rules before entering the sea.
- 2) Locate the lifeguard on duty, consult him and then enter into the sea. Beaches that are safe on one day can be extremely treacherous on another, due to changing tidal activity.
- 3) Always keep one person from your group on the shore to act as a lookout. He will be able to

call upon the life guard should you need assistance.

4)If there are no lifeguards or warning boards at a beach, consider it dangerous and do not enter.

5)Entering into seawater after consumption of alcohol is highly dangerous and almost suicidal.

6)Swimming in deep waters is not advisable, even for accomplished swimmers. If you do not know to swim or have not experienced swimming in the sea, do not venture beyond the depth recommended by the Lifeguard.

7)Tourists visiting beaches are requested to read the Caution Boards erected at the main entrance of the beach and to follow the instructions on them.

8)Bathing / Swimming in the sea during monsoons is prohibited. It is extremely dangerous and may lead to death by drowning. Even trying to stand in ankle deep waters during monsoons is dangerous as the undercurrents can sweep you off your feet and drag you into deep waters. Monsoon season normally starts around 1st June and ends around 30th September.

In-case of emergency , please call:

| | |
|-------------------|----------------------|
| Tourism Helpline | 1364 |
| Medical Emergency | 108 |
| Police | 100 / 2428000 |
| Tourists Police | 0832437038 |
| Coast Guard | 1718 / 2520584 |
| Dept. of Tourism | 0832438750 / 52 |
| GTDC | 0832226515 / 2224132 |
| Ambulance | 102 |
| Fire | 101 |

Do consult the lifeguard on the beach before venturing into the water



GTDC RESIDENCIES TARIFF CARD

ACCOMMODATION TARIFF FOR THE YEAR FROM 15 - 06 - 2023 TO 15 - 06 - 2024 (PLUS GST AS APPLICABLE)

| Residencies at your service 24x7 | | 15-06-2023 to 22-12-2023 & 02-01-2024 to 15-06-2024 | | | | | 23/12/2023 To 01/01/2024 | | | | |
|----------------------------------|-----------------------------------|---|------------------------|---------------------------------|------------|------------------|--------------------------|------------------------|---------------------------------|------------|------------------|
| Sr.No. | Residency | Double Room | AC Room | AC Dix | Suite Room | Dormitory | Double Room | AC Room | AC Dix | Suite Room | Dormitory |
| 1 | Panjim Residency 7887897524 | | 4250 | 4600 | | | | 4675 | 5060 | | |
| 2 | Margao Residency 7887897522 | 1700 1200(CR) | 1900 | | 2500 | | 1870 1320(CR) | 2090 | | 2750 | |
| 3 | Mapusa Residency 7887897523 | 1800 | 2300 | | 2700 | 2600 4 (Beds) | 1980 | 2090 | | 2970 | 2860 4 (Beds) |
| 4 | Vasco Residency 7887897525 | 1700 | 1900 | | | | 1870 | 2090 | | | |
| 5 | Calangute Residency 7887897528 | | | 5000 RF 4500 SV 4000 Cott | 5700 RF | | | | 5500 RF 4950 SV 4400 Cott | 6270 RF | |
| 6 | Miramar Residency 7887897526 | | | 3200 | 3400 | | | | 3520 | 3740 | |
| 7 | Colva Residency 7887897527 | 2300 | 2700 SV 2500 RV | | | | 2530 | 2970 SV 2750 RV | | | |
| 8 | Farmagudi Residency 7887897531 | 1500 | | | 2900 | | 1650 | | | 3190 | |
| 9 | Mayem Residency 7887897556 | | 1950 (LV) 1850 (RV) | 2150 | 2500 | 3000 8 (Beds) | | 2145 (LV) 2035 (RV) | 2365 | 2750 | 3300 8 (Beds) |
| 10 | Old Goa Residency 7887897532 | 1550 | 1750 | 2250 | | | 1750 | 1925 | 2475 | | |

Note:- # CR- Comer Room # RF- Resort Front # SV- Sea / Side View # Cott- Cottages # LV- Lake View # RV- Rear View
Note*: Above rates are subject to revision (for Latest updates / rates kindly visit GTDC Website - www.goa-tourism.com)